

## Installation Guide

### Please contact AFA first

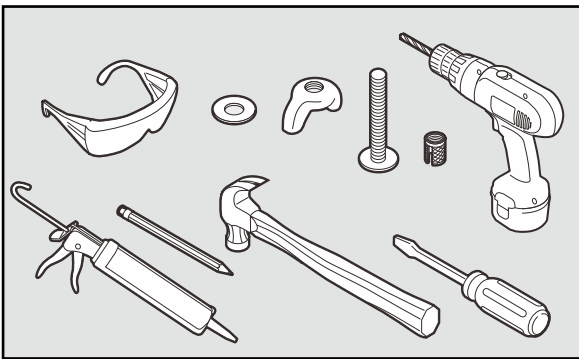
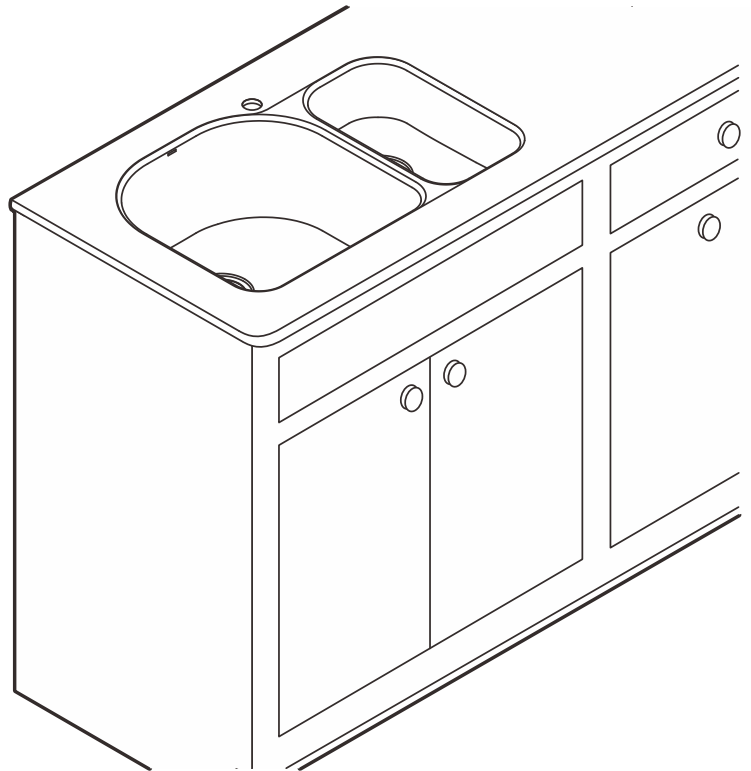
For Installation Help, Missing or Replacement Parts

Phone: (949)477-4195

Fax: (949)477-4196

Email: [customer.service@afastainless.com](mailto:customer.service@afastainless.com)

AFA USA LLC



### HELPFUL TOOLS











For safety and ease of faucet replacement, AFA recommends the use of these helpful tools.

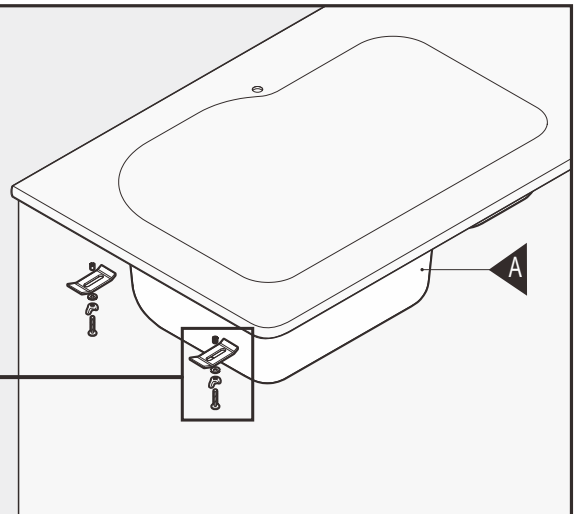
### STAINLESS STEEL UNDERMOUNT SINKS

INCLUDES ALL AFA UNDERMOUNT SINKS

\* Hardware not included and may vary by countertop material.

*Professional Series sinks include mounting hardware.*

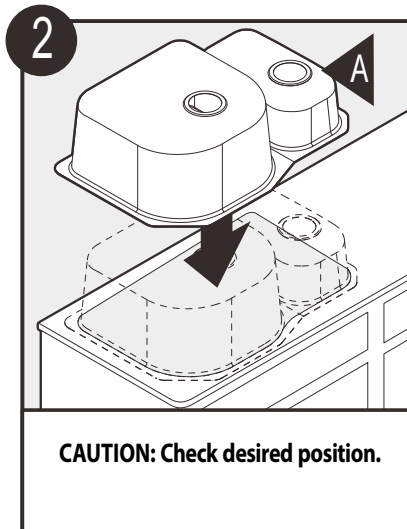
Mounting Hardware	Single Bowl	Double Bowl
 * 	x8	x10
 	x8	x10
 * 	x8	x10
 * 	x8	x10
 * 	x8	x10



# AFAStainless

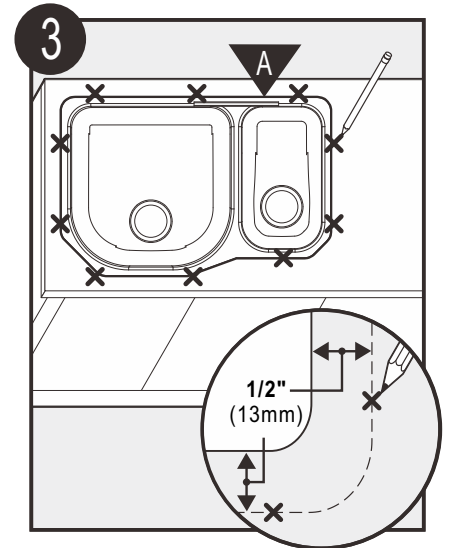


A fabricator can use the enclosed cardboard pattern to create the countertop hole.

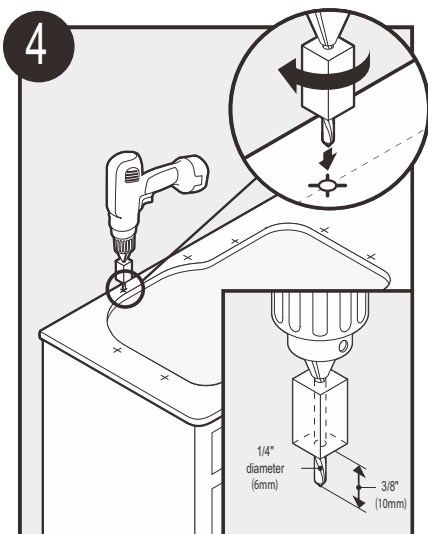


**CAUTION: Check desired position.**

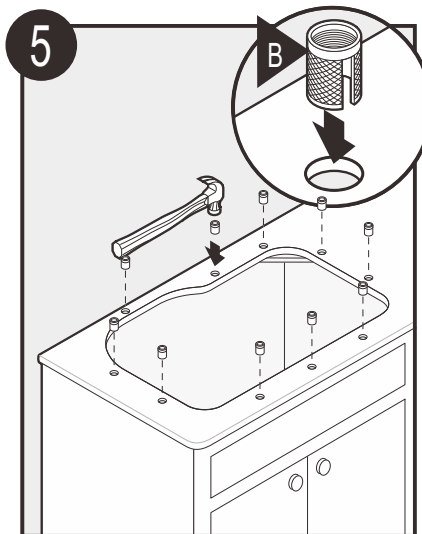
Turn counter upside down and align the bowl to countertop cutout.



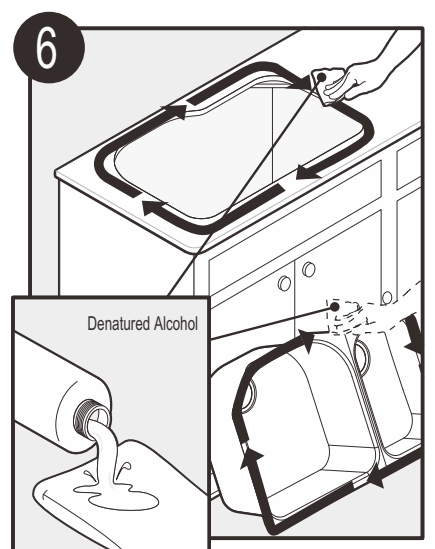
Determine location for mounting brackets; space evenly around the underside. Mounting holes should be 1/2" out from the edge of the sink ledge.



Remove sink from counter and drill mounting holes 1/4" round by 3/8" deep.

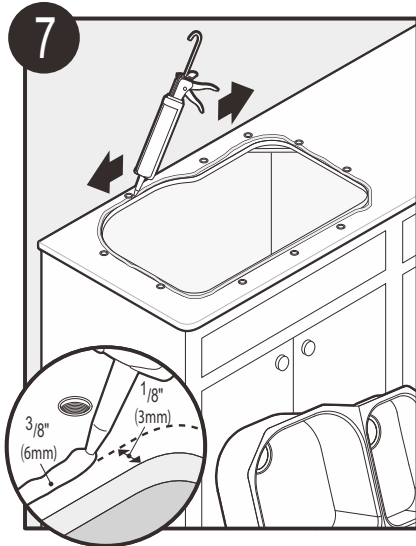


Installation hardware not included. Consult your professional installer. Hardware can vary.

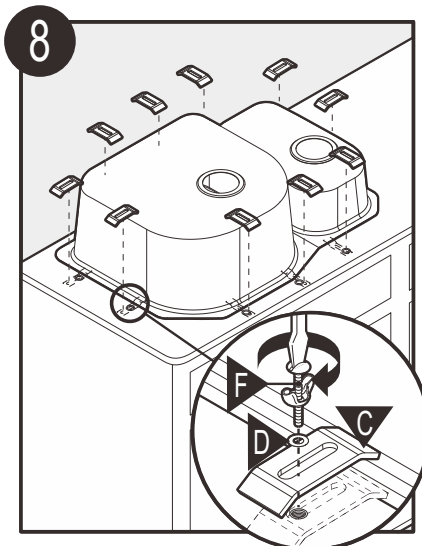


Clean underside of counter and top rim of sink thoroughly.

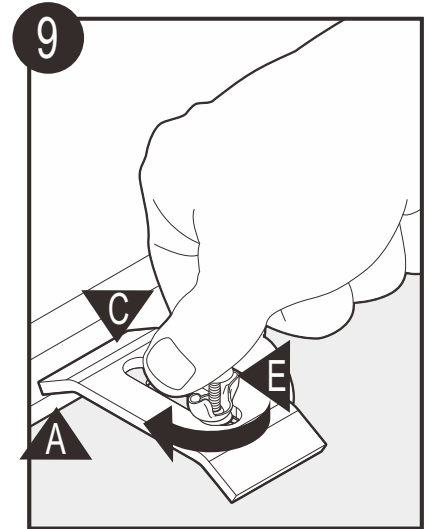
# AFAStainless



Apply a bead of caulk 1/8"-1/4" away from edge of counter cutout and then align sink on counter. Caulk not included. Consult your professional installer. Sealants may vary.



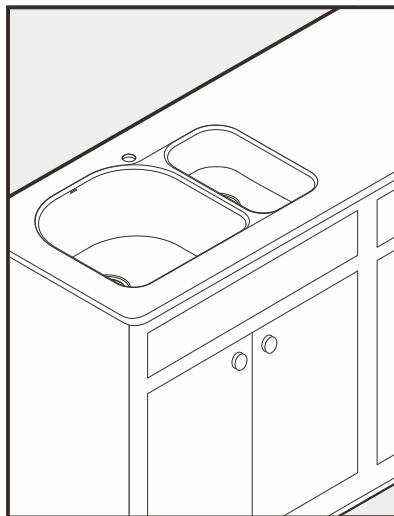
Attach mounting hardware (not included). Consult your professional installer. Hardware can vary. Position brackets so that clip edge overlaps sink ledge and thread screw into predrilled holes through clip.



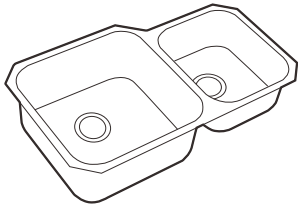
Tighten brackets evenly. Do not overtighten.



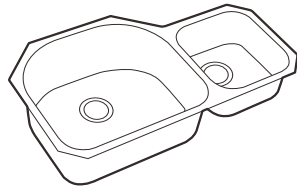
Complete counter installation and wipe away any excess caulk from sink rim.



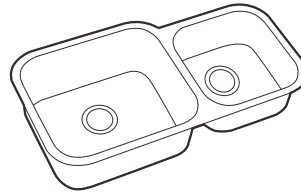
Connect faucet and drain fittings.



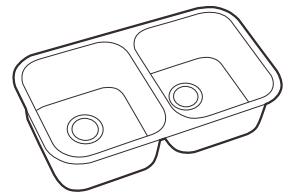
AFUR3420UL



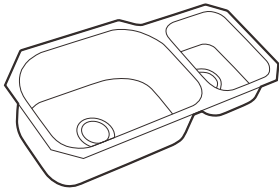
AFUR3721UL



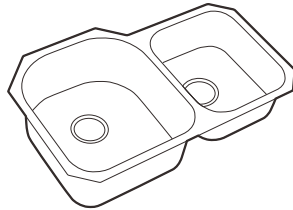
AFUR3418UL



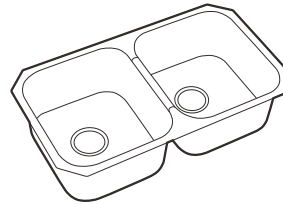
AFUR3218UE



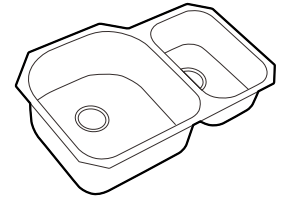
AFUR3317UL



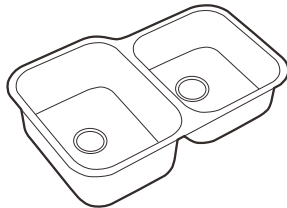
AFUR3220UL



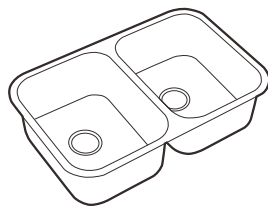
AFUR3218UED



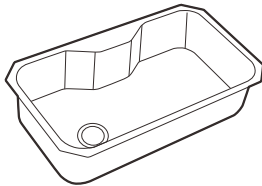
AFUR3120UL



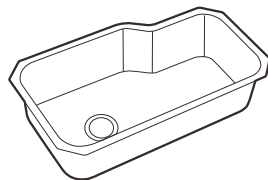
AFUR3221UL



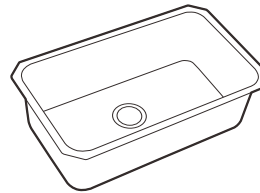
AFUR3221UE



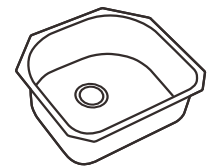
AFUR3318USM



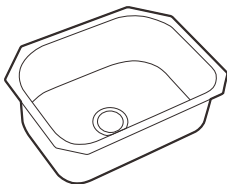
AFUR3318USR



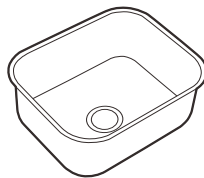
AFUR3018US



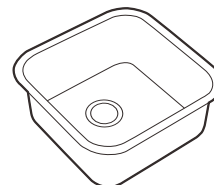
AFUR2421US



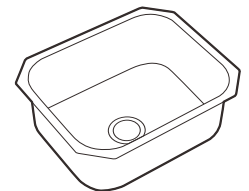
AFUR2318US



AFUR2117US



AFUR2020US



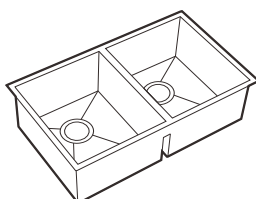
AFUR2218US



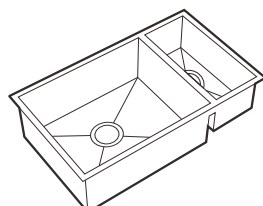
AFUR1715US



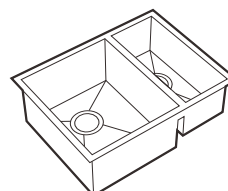
AFUR1314US



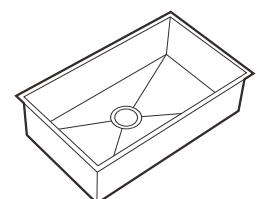
AFOR3017UE



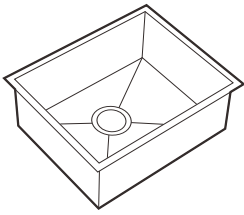
AFOR3017UL



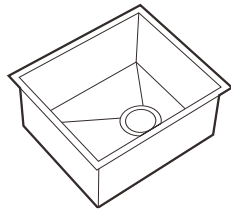
AFOR2317UL



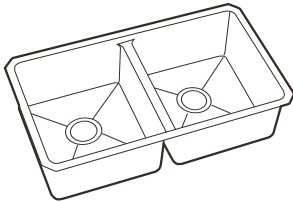
AFOR3017US



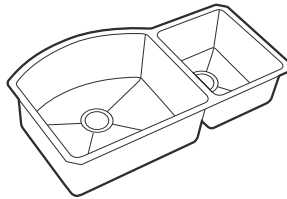
AF0R2217US



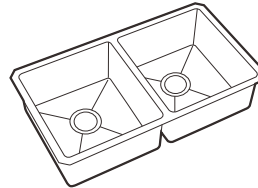
AF0R1517US



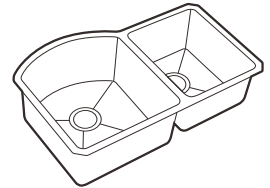
AF2R3218UED



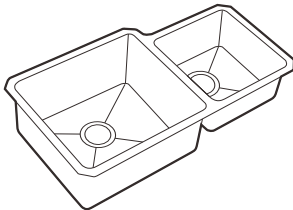
AF2R3721UL



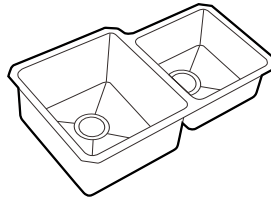
AF1R3218UE



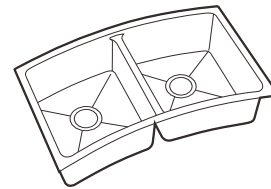
AF2R3220UL



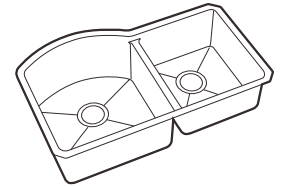
AF2R3418UL



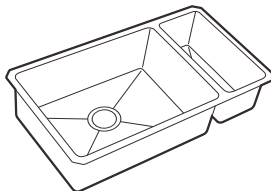
AF2R3221UL



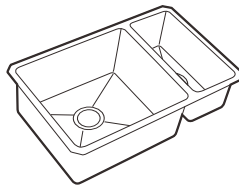
AF2R3221UED



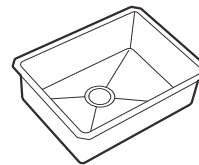
AF2R3220ULD



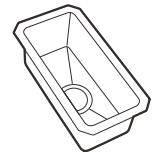
AF1R3118UL



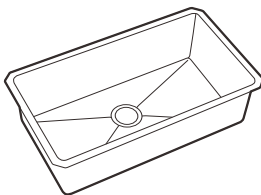
AF1R2818UL



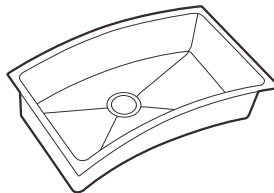
AF1R2318US



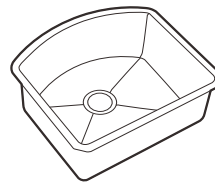
AF1R0818US



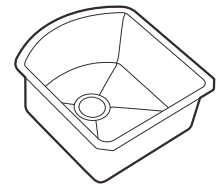
AF2R3218US



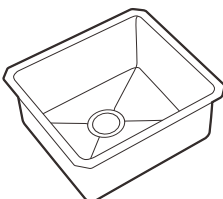
AF2R3221US



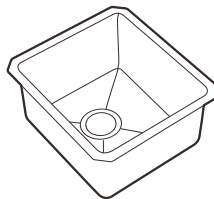
AF2R2421US



AF2R1820US



AF2R2018US



AF2R1618US